

PRODUCT DATASHEET

SMART T8 TUBE 4FT Lumbient 18 W 6500 K (Full/Dim)

LL TUBE LIGHT - Smart LED tube light with dimmable built-in microwave motion sensors

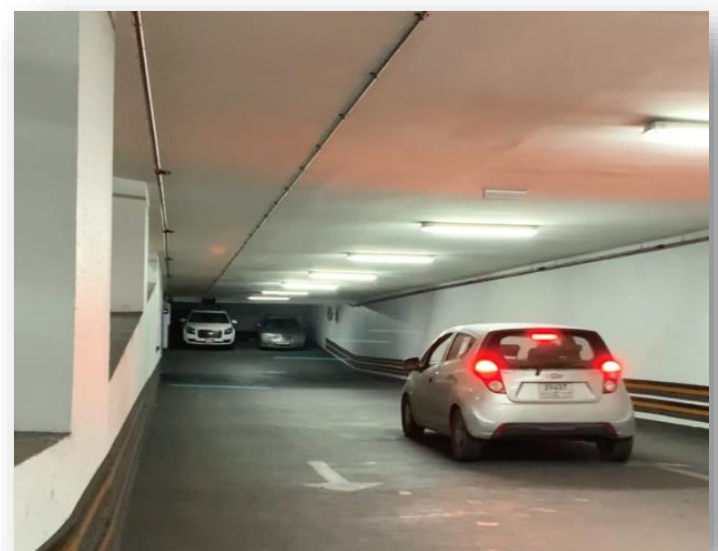


AREAS OF APPLICATION

- Parking Areas
- Corridors
- Lobbies
- Garbage Rooms
- Service Rooms
- Low footfall areas

PRODUCT BENEFITS

- Highly efficient LED chip and high IP rating on luminaire front side
- Low maintenance and operation costs due to long lifetime of LED
- Energy savings up to 90% thanks to the smart operational criteria that is due to the built-in smart sensor
- Energy savings thanks to system efficiency of up to 100 lm/W
- Suitable for use in areas with high and low elevation ceilings



PRODUCT FEATURES

- Color rendering index Ra: 80
- Initial color consistency: < 6 SDCM
- CE & RoHS test certificates
- Long lifetime: up to 50,000 h
- Type of protection: IP20

OPERATION CRITERIA

- As the smart sensor detects any moving object, light will be working on full capacity/power until it senses no movement for 30-45 seconds, it will automatically dim to 20% of its full power. Ex: for an 18W tube light, at no detection of motion by sensor, the light will dim to 3.6W until it detects motion over a 6-8 m distance, it will operate back to its full power; 18W. Through this technology, energy savings would reach up to 90% compared to the use of conventional lighting.



TECHNICAL DATA

Electrical data

Nominal wattage	18.00 W
Nominal voltage	230 V
Power Factor	0.9
Mains Frequency	50 Hz

Photometrical data

Color temperature	6000 K
Luminous flux	1800 lm
Luminous efficacy	100 lm/W
Standard deviation of color matching	≤6 sdcn
Light color (designation)	Day Light
Color rendering index Ra	80

Light technical data

Beam angle	270°
------------	------

Dimensions

Length	1.2 m
--------	-------

Colors & materials

Body material	Aluminum + PC cover
Housing color	White
Product color	White

Temperature & operating conditions

Ambient temperature range	-20°C ~ +45°C
---------------------------	---------------

Lifespan

Lifespan L70 at 25 °C	50,000 h
Number of switching cycles	100,000

Additional product data

Mounting type	180° rotate G13 end cap
Mounting location	Ceiling/Wall

Capabilities

Dimmable	Yes
Type of connection	Terminal, 2-Pole (L, N)
Technology	Smart LED built-in sensor

Certificates & standards

Protection class	II
Type of protection	IP 20

Logistical Data

Product code	Packaging unit (Pieces/Unit)	Dimensions (length x width x height)	Gross weight	Volume
--------------	------------------------------	--------------------------------------	--------------	--------